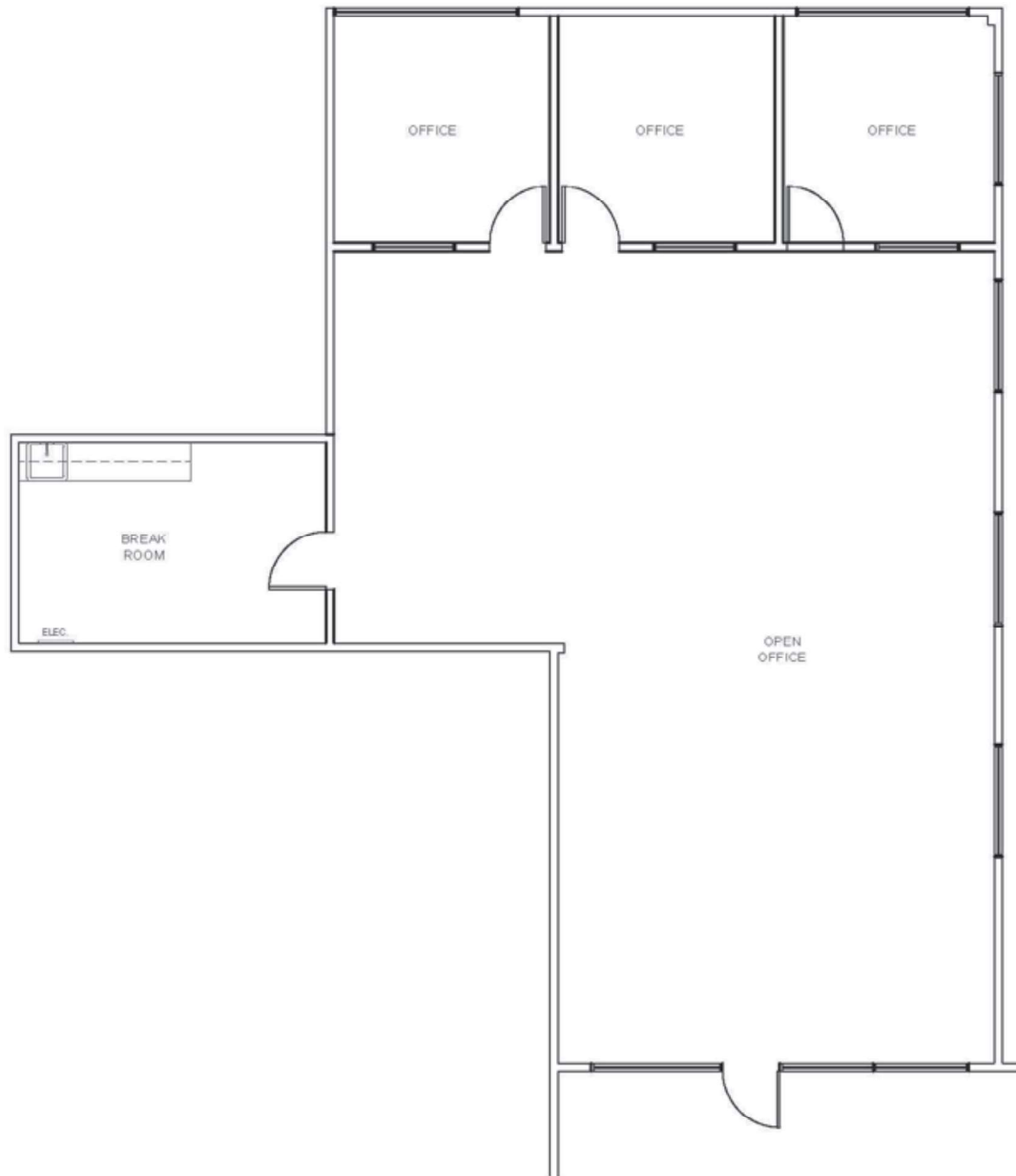


# MacArthur Park

2901 - 2961 W. MACARTHUR BLVD | SANTA ANA

SUITE 209 | ±2,615 RSF



Call to show. All suites are locked.

FOR MORE INFORMATION,  
PLEASE CONTACT:

CARTER HARRINGTON  
949.724.4710  
charrington@lee-associates.com.com  
Lic. #01762924

ALEJANDRO SHERRATT  
949.724.4740  
asherratt@lee-associates.com  
Lic. #02159392

 LEE &  
ASSOCIATES  
NEWPORT BEACH